

## Herdscreen® ASF Antibody Test

**Herdscreen® ASF Antibody Test** is a rapid pen-side test for the detection of specific antibodies against African Swine Fever. The test is based on the recombinant protein p30 derived from a genotype 2 virus isolate and detects exposure to ASF virus. In comprehensive studies at the EU reference laboratory for ASF in Spain (CISA-INIA) with panels of selected serum and blood samples from domestic pigs, the ASF Antibody Test showed a well-balanced specificity and sensitivity (*see Performance*).

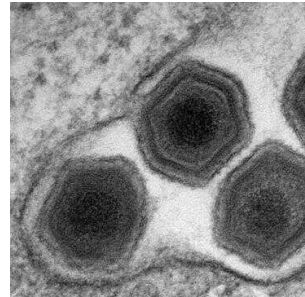
**THE CHALLENGE:** rapid in-situ detection of infected pigs with the highly contagious ASF virus.

ASF is probably the most relevant swine infectious disease today, which is extended practically worldwide. ASF virus is highly contagious and easily transmitted. Control measures, including the animal immobilization and culling, have to be done immediately after the disease is confirmed. The high variability in the manifestation of the clinical disease of ASF, from acute to asymptomatic carriers, makes antibody detection an essential tool to stop the virus dissemination among farms and between domestic and feral pigs, which have proven to be long lasting reservoirs of this virus.

**THE GOAL:** timely verification of the presence or absence of exposure to ASFV to stop virus dissemination and farm biosecurity.

Whereas some countries have managed to eradicate the virus in the past and achieve a disease-free status, ASF remains an endemic disease in many others. Timely and early detection is essential for preventing the spread of the virus and for strengthening biosecurity. A specific serological rapid test is a relevant decision tool at the farms, in the animal transportation controls and possibly also to detect infected animals at slaughter houses, avoiding disease dissemination through direct cross infection amongst pigs or by introducing contaminated pig-derived products into the food chain.

**PERFORMANCE:** In comprehensive studies including serum and blood samples from natural and experimentally infected pigs with different ASF virus genotypes (I, II, IX, X and XXIII), the Herdscreen® ASF Antibody Test demonstrated analytical specificity of 100% and analytical sensitivity of 86.2%, higher than commercial ELISA tests. This is a very confident test for the detection of ASF virus positive pigs in the second week after infection and showing IPT titers higher than 1:320. Herdscreen® ASF Antibody Test uses a carefully selected ASF virus protein. The recombinant version of this antigen is produced using Algenex's CrisBio, which is a baculovirus vector-mediated expression platform that uses insects as natural bioreactors.



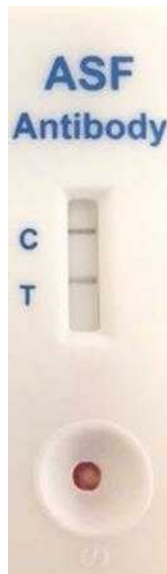
Source: The Pirbright Institute

### ASF Antibody Rapid Test Overview

**Species:** Porcine (incl. feral pigs)

**Sample:** whole blood/plasma/serum

**Assay Type:** Lateral Flow (p30)



**Purpose:** Detects exposure of ASFV infections at the herd level

**Fulfills test requirements** according to OIE guide-lines – Detects exposure in acute, sub-acute and experimentally infected pigs. Herdscreen® ASF Antibody Test has analytical specificity of 100% and analytical sensitivity of 86%, higher than commercial ELISA tests.

**Validated with panels of serum and blood samples from infected and healthy domestic pigs** by the EU reference laboratory for ASF.

This assay is a reliable tool, on a representative sample size, to demonstrate disease freedom in farms and can serve as validation for the qualification of farms (biosecurity), as pre-requisite before acquiring animals for breeding or processing and as an important tool in surveillance programs.

**Suitable for the rapid** screening of individual domestic pigs or wild boars.

**Easy handling and convenient in use** thanks to ready to use pen-side devices and simple protocols.

**Test time 20 minutes**

**High quality** – thoroughly validated and manufactured under strict ISO 9001:2015 standardized procedures in UK

***This test is the result of a collaboration between Global DX and ALGENEX***



[www.algenex.com](http://www.algenex.com)



**Global DX Ltd**

**Elmbank Business Centre,  
Menstrie, FK11 7BU, United  
Kingdom**

**T + 44 (0) 1259 230830**

**W [www.globaldx.com](http://www.globaldx.com)**

**Email: [contact@globaldx.com](mailto:contact@globaldx.com)**